



MONITORING AND CONTROL SOLUTIONS

Installing temperature sensors in Sliding Door fridges

STEP 1:

Swing the top lid open.

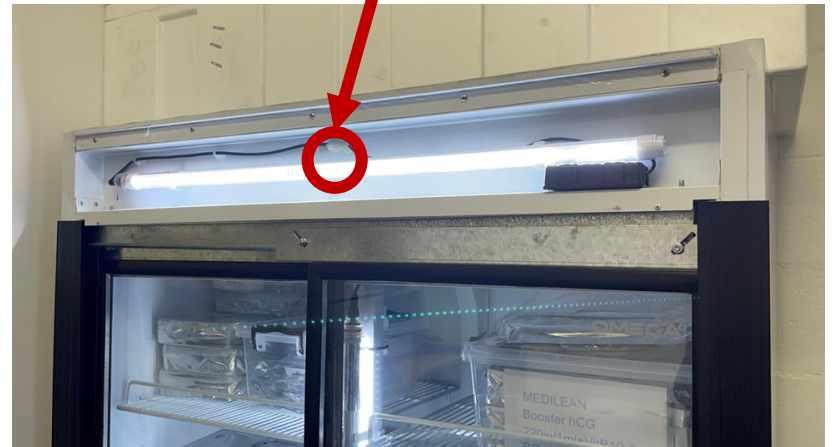
You might have to unscrew some screws on the side and on the top



STEP 2:

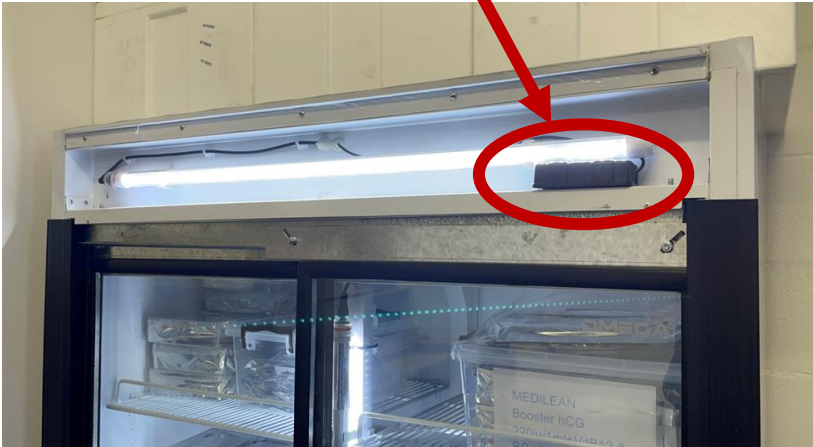
Insert the probe through the hole in the middle of the fridge.

Remove the bulb if required



STEP 3:

Place the logger somewhere in the top area.



STEP 4:

Close the lid again.



STEP 5:

Insert the temperature probe into the compression gland



STEP 6:

Remove the black cap from the glycol bottle and insert the probe into the Bottle.

Tighten the white cap, as well as the compression gland



STEP 7:

Secure the bottle in the fridge using cable-ties



STEP 8 (OPTIONAL):

If the sensor does not communicate inside the top area, place the logger on top of the fridge

